

# THE HUB

## CHARACTER AREA 3



### OVERVIEW

The Hub lies within the Venn Stream valley, at the site of the quarry facilities and storage. The site sits low within the overall landform, but is visible from distant views to the south. The site lends itself as a location for the core services and hotel / restaurant.

### ARCHITECTURE AND LANDSCAPE

- Location for landmark buildings – designed to reflect the quarry context.
- Respond to natural features – level changes, rock faces, views, Venn Stream.
- Massing and materials designed to soften appearance from distant views
- Emphasise the experience of arrival and sense of place.
- To be the recreational hub.
- Uses arranged to take advantage of the distinct levels and spaces.
- Public access to restaurant.
- Membership options for local community.

- A shop to promote local produce.
- Start of trails – geology, heritage, wildlife.
- Car parking for staff and hotel visitors.

### BIODIVERSITY

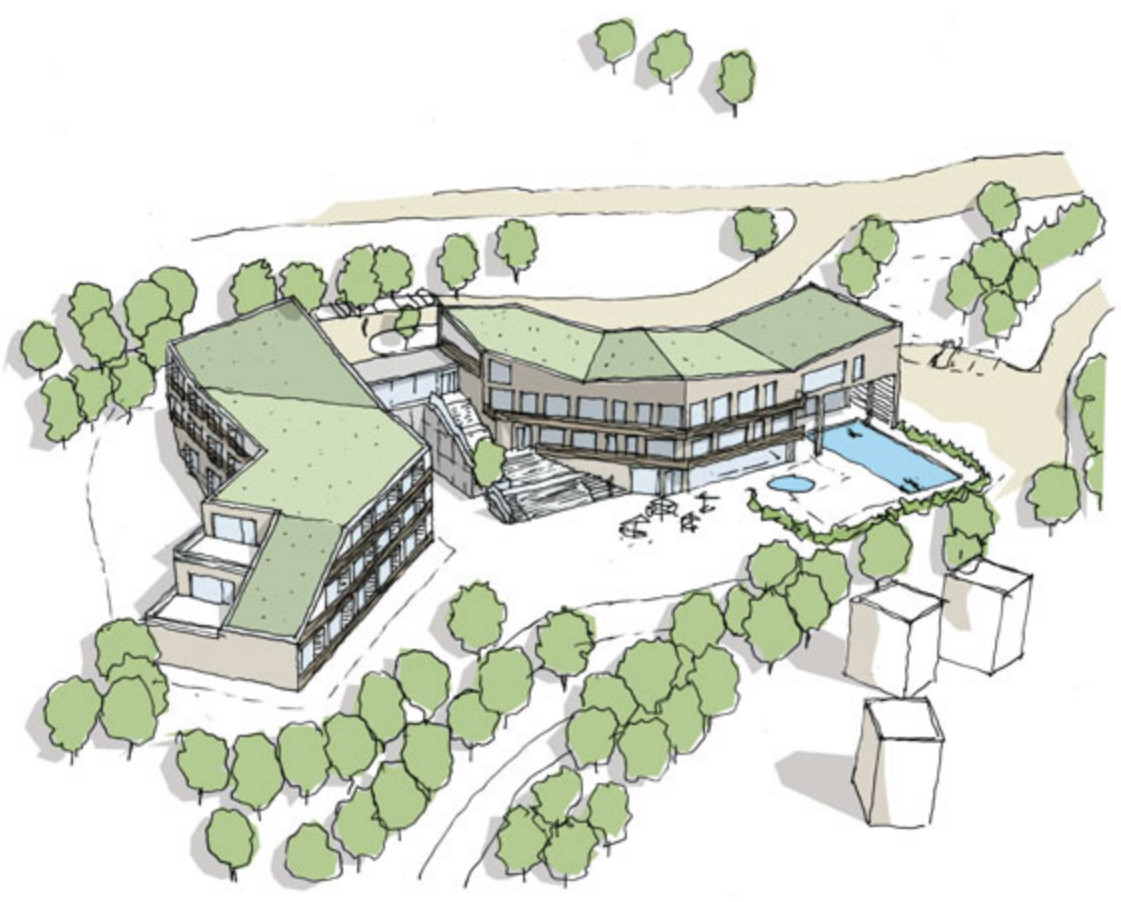
- Removal of structures and associated bat roosts to be compensated by construction of new artificial roost features nearby.
- New habitats - copses, scattered trees and linear meadow areas.
- Landscape will be permeable – allow wildlife to migrate across the Hub.
- Design will encourage greater use of existing woodland edge by bats, birds and insects.



Look and feel



Look and feel



Proposed sketch perspective



# BIRCHWOOD LAKES



HABITAT FIRST